



LONESTAR
TRUCK GROUP



inGear

Lonestar Truck Group's InGear Newsletter / Promoting Trucking with Value / August 2011

***Your one-stop source
for truck & trailer
sales, parts & service***



Freightliner & Western Star – Names You Can Trust



- *The Freightliner Cascadia with a Detroit Diesel DD15 engine uses the least amount of fuel.*
- *Freightliner and Western Star give you more truck and engine choices.*
- *Detroit Diesel and Cummins engines from 220 HP to 600 HP.*
- *Proven engines, transmissions, axles, and trucks you can trust to help you beat your competition.*
- *Improve your “Up Time” and your “Bottom Line” with a Freightliner or Western Star truck.*

Lonestar Truck Group has an experienced truck sales force with years of truck specing experience to make sure your new truck will work as hard as you work.

www.LonestarTruckGroup.com

He who uses the least fuel wins.



LONESTAR TRUCK GROUP

■ **CORLEY-WETSEL**
FREIGHTLINER - WESTERN STAR
 ABILENE, TX 1-800-535-0826

■ **ALBUQUERQUE**
FREIGHTLINER - WESTERN STAR
 ALBUQUERQUE, NM 1-800-535-6470

■ **BRYAN**
FREIGHTLINER - WESTERN STAR
 BRYAN, TX 1-866-727-9222

■ **FARMINGTON**
FREIGHTLINER WESTERN STAR
 FARMINGTON, NM 1-800-535-9031

■ **CORLEY**
FREIGHTLINER - WESTERN STAR
 SAN ANGELO, TX 1-800-901-9973

■ **SHREVEPORT TRUCK CENTER**
 SHREVEPORT, LA 1-877-700-9955

■ **TEMPLE**
FREIGHTLINER - WESTERN STAR
 TEMPLE, TX 1-800-903-6177

■ **TEXARKANA TRUCK CENTER**
 TEXARKANA, TX 1-866-940-8444

■ **TYLER TRUCK CENTER**
 TYLER, TX 1-877-600-2575

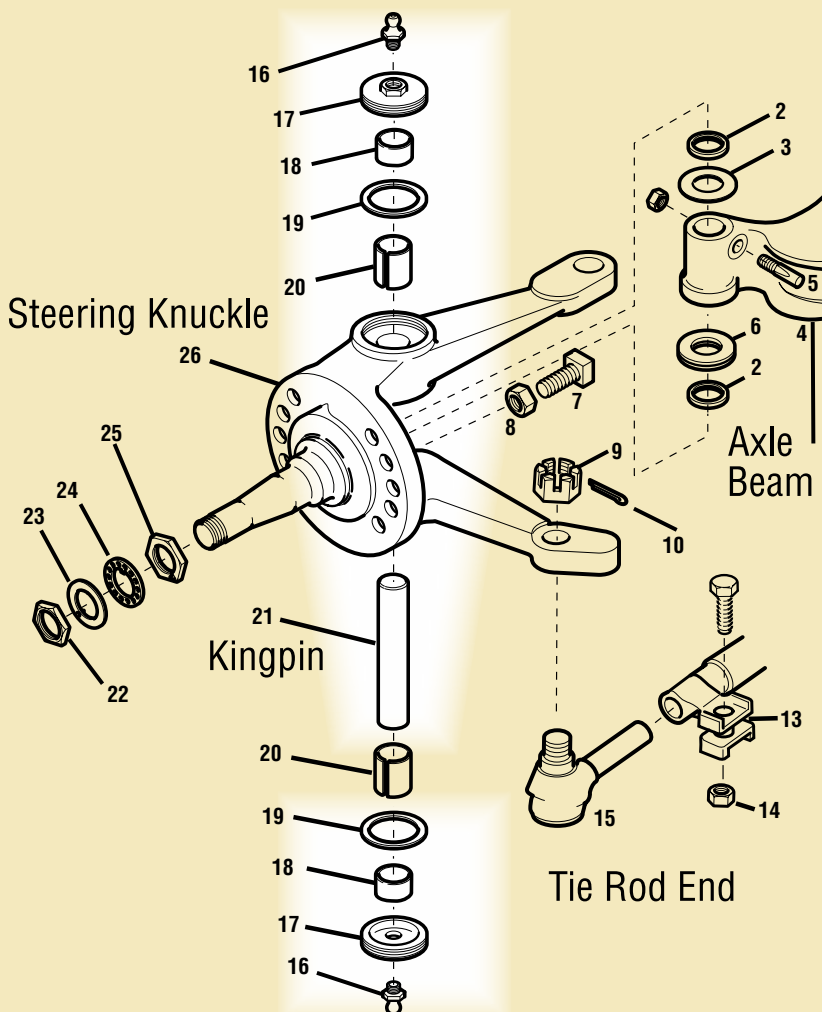
■ **(NEW) WACO**
FREIGHTLINER - WESTERN STAR
 WACO, TX 1-888-700-9735

■ **WICHITA FALLS**
FREIGHTLINER - WESTERN STAR
 WICHITA FALLS, TX 1-800-903-0322

Kingpin & Bushings Installation Special

\$559.95

(Parts Extra. See Page 4)



Specials Good Through August 31, 2011

SERVICE SATISFACTION... is standard equipment at Lonestar!

August 2011

www.LonestarTruckGroup.com

LONESTAR**PARTS SPECIALS**

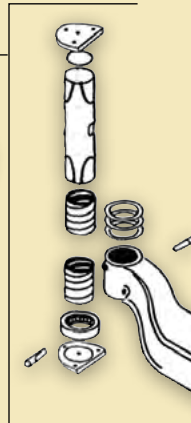
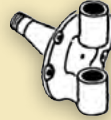
HDX-BK313	2" HINGED CLUTCH BRAKE	\$27.95 EA
HDX-90054007	UNIVERSAL MOUNT LEVELING VALVE	49.95 EA
PHM-12-006	STRAIGHT SERVICE GLADHAND	2.49 EA
PHM-12-008	STRAIGHT EMERGENCY GLADHAND	2.49 EA
022-10187	DOCUMENT HOLDER	6.95 EA
CHR-1612	C/R FRONT HUB CAP	16.49 EA
PEX-82194	ULTRA-GRAY RTV GASKET MAKER	4.95 EA
PEX-27100	HIGH STRENGTH RED THREAD LOCK	3.49 EA
PIC-300016	PENCOOL 3000 ADVANCED COOLING SYSTEM TREATMENT	4.99 EA
ABP-N53-TSM4-FL	48" FIBERGLASS C/B ANTENNA	7.99 EA
ABP-N10G-91559	CABIN AIR FILTER	10.49 EA

PARTS PICTURES ARE FOR REFERENCE ONLY. ACTUAL PARTS MAY VARY.
Prices good through August 31, 2011

PARTS SPECIAL

KAISER No Ream King Pin Sets

Typical
King Pin
Repair



All Kits Come Complete
A typical kit consists of:

- 2 - Stemco/Kaiser King Pins
- 2 or 4 Stemco/Kaiser Bushings
- 2 - Thrust Bearings
- 1 - Package of Steel Shim Spacers
- 2 or 4 Lock Pins (depending on axle design)
- 4 - End Plates and Seals
- 1 - Package of Cap Screws and Washers



K120E	Eaton Front Axle	Now \$319.95
K122E	Eaton Front Axle	Now \$269.95
K961L	Meritor Front Axle	Now \$299.95
K981R	Meritor Front Axle	Now \$329.95

Prices good through August 31, 2011

LONESTAR LABOR SPECIAL

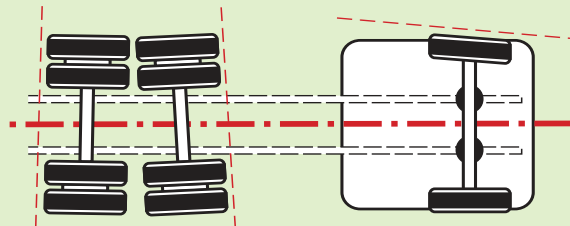
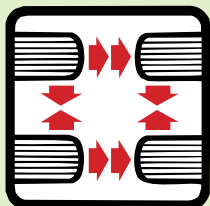
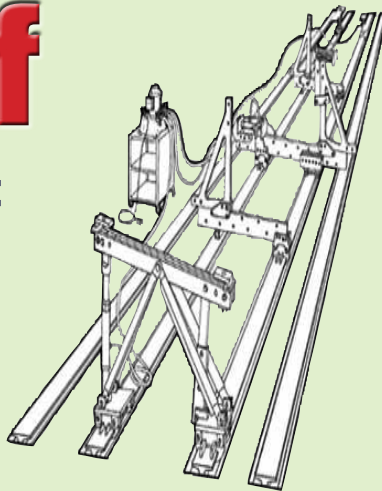
10% Off

■ Front Axle Alignment

- Check front-end components
- Check suspension
- Perform front-axle alignment

■ 3 Axle Alignment.

- Check front-end components
- Check suspension
- Perform 3-axle alignment



Call or visit your nearest dealer for price. Prices may vary by dealer location. Offer good through August 31, 2011

www.LonestarTruckGroup.com

Lonestar Truck Group MANAGERS' SPECIALS



2007 Freightliner CL11264S - Columbia 112, MBE4000 Mercedes Engine 350 hp; Diesel; 10 Spd OD; Engine Brake; Air Ride; 3.58 Ratio; 22.5 Tires; Aluminum/Steel Wheels; 162 in Wheelbase; 169,000 Miles. (7LX20900-ABL-1) \$48,500 **\$46,500**



2004 Sterling AT9500, MBE4000 Mercedes Engine 410 hp; Diesel; 10 Spd OD; Engine Brake; Air Ride Suspension; 3.90 Ratio; 22.5 Tires; All Aluminum Wheels; 180 in Wheelbase; Tandem Axle; 445,490 Miles. (4AM18601-ABQ-1) \$28,275 **\$27,900**



2005 Freightliner CL12064ST Columbia 120, 14.0 Detroit Engine 470 hp; 606,000 mi; Diesel; 10 Spd OD; Engine Brake; Air Ride; 3.70 Ratio; 11 R 22.5 Tires; Steel Disc Wheels; 171 in WB. (5LU94874-BRY-1) \$35,500 **\$33,500**



2011 Western Star 4900FA, Detroit DD15, 505 hp; 13 Spd; Diesel; Engine Brake; AirLiner Susp; 4.10 Ratio; 24.5 Tires; Alum/Steel Wheels; 230" WB; 14,600 lb Front Axle Wt; 46,000 lb Rear Axle Wt. New (8PBD1894-FAR-1) \$128,900 **\$128,400**



1994 Fontaine Flatbed, 4' x 102", Steel Wheels, 11R22.5 Tires, Air Ride Suspension, Hardwood Floor, Excellent trailer for the money. Good Brakes and drums, decent rubber. R1562241-SAN-TRL-1) **\$8,250**



2004 Freightliner CL120, Detroit Diesel DDC 12.7, 375 HP, 10 Spd, 166" Wheelbase, 22.5 LP Tires, Steel Wheels. Hard to find single axle. Lease maintained. 552,120 Miles. (4LN05762-SHV-1) **\$22,500**



2005 Freightliner CL12064ST Columbia 120, 14 Detroit Engine 430 hp; Diesel; 10 Spd OD; Engine Brake; Air Ride; 3:70 Ratio; 11R 22.5 Tires; All Steel Wheels; 171 in Wheelbase; Tandem Axle, 475,000 Miles. (5LU13032-TEM-1) \$42,500 **\$40,500**



2012 Freightliner 114SD, Detroit Diesel DD13, 450 HP, 10 Spd, Air Ride Suspension, 3.70 Ratio, 210" Wheelbase, All Aluminum Wheels, 24.5 LP Tires, Warranty, New. (CHBK1588-TXK-1) **\$114,367**



2001 Freightliner Tractor, Caterpillar, 450 HP, 15 Spd, Air Ride, 20,000 lb. Front Axle Weight, 46,000 lb. Rear Axle Weight. (1LJ15337-TYL-1) \$41,500 **\$39,500**



2006 Freightliner CL12064ST Columbia 120, 14.0 Detroit Engine 430 hp; Diesel; 10 Spd OD; Engine Brake; Air Ride Suspension; 3.70 Ratio; 22.5 Tires; All Steel Wheels; 171 in Wheelbase; Tandem Axle, 530,000 Miles. (6LV84992-WAC-1) \$42,500 **\$40,500**



(Qty: 2) **2005 Freightliner CL12064ST** Columbia 120, Detroit 490 hp; Diesel; 10 Spd OD; Engine Brake; Air Ride; 3.90 Ratio; 11R22.5 Tires; Steel Wheels; 183" WB, 612,000 Miles & 597,751 Miles. (5LU68685-WFF-1) **\$35,900**



2007 Fontaine Drop Deck, (Qty: 2) Air Ride Suspension; 48 ft Length x 102 in Width; Apitong Floor; 22.5 Tires; Steel Disc Wheels; Fixed Spread Tandem Axle; Steel Composition; Sliding Winches, 50% Rubber. (71541214-SHV-TRL-1A) **\$19,500**

Lonestar Truck Group is your place for quality used trucks.



2004 Sterling AT9513, DDC 12.7 Detroit Engine 430 hp; Diesel; 10 Spd; Engine Brake; Air Ride; 3.73 Ratio; 22.5 LP Tires; Aluminum Outside Wheels; 173 in WB; Gross Vehicle Weight 52,000 lbs, 614,750 Miles. (4AM99598-ABL-2) ~~\$29,500~~



2005 Utility Reefer, Air Ride Suspension; 53 ft Length x 102 in Width; Swing Door; Aluminum Floor; 11R22.5 Tires; Aluminum Outside Wheels; 12,000 hours on Carrier Unit!!; (5M661611-ABL-TRL-3) ~~\$24,500~~ **\$22,800**



2005 Freightliner CL12064ST Columbia 70" Condo; MBE4000 Mercedes 450 hp; Diesel; 10 Spd OD; Eng. Brake; Air Ride; 3.58 Ratio; 22.5 Tires; Alum/Steel Wheels; 230" WB, 769,500 Miles. (5LU23237-ABQ-2) ~~\$24,900~~ **\$23,900**



2008 Freightliner CL12064ST Columbia 120, 70 in Double Deck Condo; 14.0 Series 60 Detroit 515 hp; Diesel; 13 Spd OD; Engine Brake; Air Ride; 3.36 Ratio; 22.5 Tires; Alum. Wheels; 232 in WB, 457,000 Miles. (8DZ15870-ABQ-3) ~~\$64,900~~ **\$61,900**



(Qty: 2) **2003 International 4700**, DT444 International Engine 210 Horsepower; 191,000 Miles. (3N574943-BRY-2)



2007 Freightliner CL12064ST Columbia 120, 58 in Mid Roof XT Sleeper; 14.0 Detroit 430 HP; Diesel; Automatic OD; Engine Brake; Air Ride; 11R 24.5 Tires; All Aluminum Wheels; 230 in WB; Tandem Ax. 365,000 Miles. (7LX87541-BRY-3)



2011 Freightliner Coronado, Detroit DD15, 475 HP, 10 SPD, Engine Brake, Tuff Trac Susp, 227" WB, Air Brakes, Tire Size 24.5, Dual Locking Differentials, Aluminum Outers, Zero Miles. (BDAW9999-FAR-2) ~~\$119,500~~ **\$119,000**



2007 Freightliner M2 Mercedes MBE 300, 300 HP, Allison Automatic Transmission, Air Ride, 22.5 Tires, Aluminum Wheels, Air Brakes, Schwalbe Conversion, Loaded, Leather Seats, Great Sound System, DVD Player, 28,000 Miles. (7HY38622-FAR-3)



2004 Freightliner, CL12064ST Columbia 120, Series 60 Detroit Engine 470 hp; 10 Spd OD; Diesel; Engine Brake; Air Ride; 3.70 Ratio; 22.5 TALL Tires; All Steel Wheels; 171" WB; Tandem Axle; 581,000 Miles. (4LM09963-SAN-2) ~~\$29,500~~



2006 Transcraft Drop Deck, 48" x 102', Steel Wheels, 22.5 LP Tires, Hardwood Floor, Hard to find closed tandem drop deck. Ready to make you some money. (61081465-SAN-TRL-3)



2007 Sterling LT 9500 Tractor, Mercedes MBE4000, 10 Spd, Air Ride Suspension, 24.5 Tires, Aluminum Front Wheels, Steel Rear Wheels, 240,120 Miles. (7AX44104-SHV-2) ~~\$39,500~~



2005 International DT466, 210 HP, Allison Automatic Transmission, 24' Flat Bed, Spring Suspension, 254" Wheelbase, 22.5 LP Tires, Steel Wheels, 172,110 Miles. (5H119781-SHV-3)

See a complete inventory of new and used trucks and trailers online at: www.LonestarTruckGroup.com

Many models & colors to choose from.



2007 Freightliner C12064ST Century 120, 70 in Raised Roof Condo; 14.0 Detroit Engine 500 hp; Diesel; 10 Spd OD; Engine Brake; Air Ride; 3.42 Ratio; 22.5 Tires; All Aluminum Wheels; 230 in WB; Tandem Axle, 616,000 Miles. (7LW48362-TEM-2)



2007 Freightliner CST12064ST Century 120, 70 in Raised Roof Condo; 14.0 Detroit Engine 500 hp; 10 Spd OD; Engine Brake; Air Ride; 3.42 Ratio; LP 22.5 Tires; All Aluminum Wheels; 230 in WB; Tandem Axle, 505,000 Miles. (7LW48535-TEM-3)



2004 Freightliner CL12064ST Columbia 120, 70 in Condo Sleeper; C15 Caterpillar 435 hp; 10 Spd OD; Engine Brake; Air Ride; 3.58 Ratio; 22.5 LP Tires; Aluminum/Steel Wheels; 230 in WB; Tandem Axle, 628,700 Miles. (4LN14441-TXK-2)



2003 Freightliner CL120 Tractor, Detroit Diesel DDC 12.7, 430 HP, 10 Spd, Air Ride Suspension, 171" Wheelbase, Steel Wheels, 22.5 LP Tires, 517,321 Miles. (3LK55310-TXK-3)



2007 Freightliner CC13264 Coronado, 70" Condo Sleeper, DDC 14.0 Detroit Engine, 515 HP, 13 Spd Overdrive, Engine Brake, Air Ride Suspension, All Aluminum Wheels, Tandem Axle, 596,330 Miles. (7PY2309-TYL-2)



2005 Freightliner CL12064S Columbia 120, 14.0L Detroit Engine 455 hp; 10 Spd OD; Diesel; 4 Bag Air Ride Suspension; 3.70 Ratio; 22.5LP Tires; All Steel Wheels; 171 in Wheelbase; Tandem Axle, 552,312 Miles. (5LN76723-TYL-3)



2008 Freightliner C12064ST Century 120, 70 in Raised Roof Condo; 14.0 Detroit Engine 500 hp; 10 Spd OD; Engine Brake; Air Ride; 3.42 Ratio; 22.5 Tires; All Aluminum Wheels; 230 in WB; Tandem Axle, 462,900 Miles. (8LW48831-WAC-2)



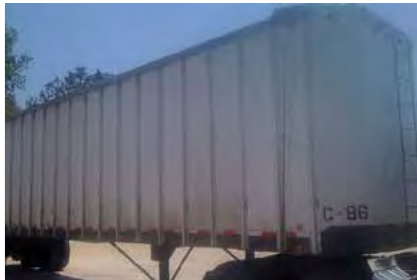
2012 Freightliner CC12264 Coronado SD, DD 15 Detroit Engine 505 hp; Diesel; 10 Spd OD; Engine Brake; Air Ride; 3.55 Ratio; 11R 24.5 Tires; Aluminum/Steel Wheels; 215 in Wheelbase; Tandem Axle, New. (CDBH0749-WAC-3)



2007 Peterbilt 379 EXT, Caterpillar C15, 475 HP, 13 SPD, 70" Sleeper, Air Ride Suspension, 3.25 Ratio, 265" Wheelbase, Aluminum Front Wheels, Aluminum Outer Rear, 22.5 LP Tires, 760,000 Miles. (7D673941-WFF-2)



2007 Freightliner CL12064ST Columbia 120, 70 in Raised Roof Condo; Detroit 490 hp; Diesel; 10 Spd OD; Engine Brake; Air Ride; 3.42 Ratio; 24.5LP Tires; All Aluminum Wheels; 235 in Wheelbase; Tandem Axle; 471,000 Miles. (7LX50736-WFF-3)



2008 Peerless Open Top Chip Trailer. 42' x 96", 112R24.5 Tires, Aluminum Floor, Top Swing Gate. (JPJ11670-TYL-TRL-3b) **\$9,500**



1998 Galyean 4-Bunk Log, Spring Suspension; 40 ft Length; 24.5 Tires; Steel Disc Wheels; Fixed Tandem Axle; Steel Composition; Call for more details. (WHO15604-TXK-TRL-3b) **\$10,000**

Lonestar Truck Group
2051 Hughes Road
Grapevine, TX 76051

PRESORT STANDARD
U S POSTAGE
PAID
GLOBAL MAIL

RETURN SERVICE REQUESTED



**Your one-stop source
for truck and trailer
sales, parts and service.**

SMART
PHONE?
SCAN ME
FOR FULL
INVENTORY



www.LonestarTruckGroup.com • LS-1280 InGear Newsletter • ©Lonestar Truck Group, August 2011

LonestarTruckGroup.com — your on-line source for 100's of USED TRUCKS & TRAILERS



We sell and buy all makes and models. Trades are welcome.

Many late models are currently in stock, including box vans, vocational trucks and various sleepers —

***Raised Roofs - Mid Roofs - Day Cabs
Trailers - Flat Beds - Drop Decks - Low
Boys - Reefers - Dry Vans - Belly Dumps***

Online Inventory Search to assist you

Or call any of our 11 dealers where one of our professional sales staff will help you find exactly what you need. Lonestar Truck Group used trucks and trailers are thoroughly inspected by our service department before being offered for sale.

