



InGear

Is Your Vehicle Ready for a CSA 2010 Vehicle Maintenance Inspection?

What is CSA 2010?

Comprehensive Safety Analysis - FMCSA's attempt at increasing commercial vehicle safety by introducing new enforcement of laws and regulation compliance and allowing FMCSA and State partners to contact and address safety issues with carriers before accidents occur.

Key things to consider in compliance of CSA 2010

Maintenance compliance standards have been tightened up in CSA 2010.

The vehicle operator who takes an unfit vehicle on public roads and gets stopped by authorities will be fined and the vehicle taken out of service until the repairs are made. More than ever you are responsible for what you drive.

Examples of Vehicle Maintenance Inspection include:

- Brake System
- Coupling Devices
- Exhaust System
- Fuel System
- Horns
- Lighting Devices & Reflectors
- Safe Loading
- Steering Mechanism
- Suspension
- Frame
- Tires
- Wheels and Rims
- Windshield Glazing
- Windshield Wipers

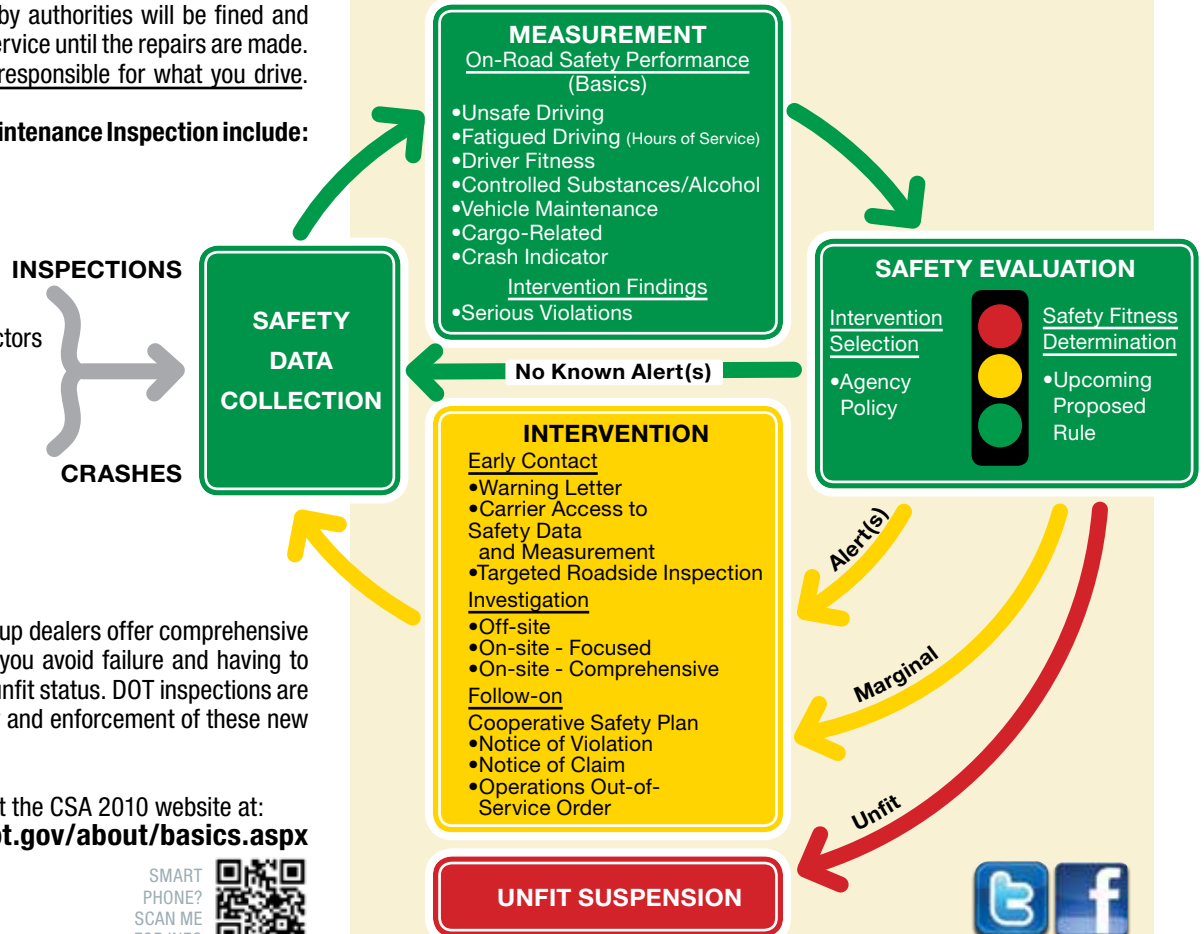
All 11 Lonestar Truck Group dealers offer comprehensive DOT inspections to help you avoid failure and having to cease operations due to unfit status. DOT inspections are strictly focused on safety and enforcement of these new CSA guidelines.

For more information visit the CSA 2010 website at: <http://csa.fmcsa.dot.gov/about/basics.aspx>



Your one-stop source for truck sales, parts & service.

All 11 Lonestar Truck Group dealers offer comprehensive inspections to help you stay safe and comply with the new CSA 2010 standards.





LONESTAR TRUCK GROUP

■ **CORLEY-WETSEL**
FREIGHTLINER - WESTERN STAR
 ABILENE, TX 1-800-535-0826

■ **ALBUQUERQUE**
FREIGHTLINER - WESTERN STAR
 ALBUQUERQUE, NM 1-800-535-6470

■ **BRYAN**
FREIGHTLINER - WESTERN STAR
 BRYAN, TX 1-866-727-9222

■ **FARMINGTON**
FREIGHTLINER WESTERN STAR
 FARMINGTON, NM 1-800-535-9031

■ **CORLEY**
FREIGHTLINER - WESTERN STAR
 SAN ANGELO, TX 1-800-901-9973

■ **SHREVEPORT TRUCK CENTER**
 SHREVEPORT, LA 1-877-700-9955

■ **TEMPLE**
FREIGHTLINER - WESTERN STAR
 TEMPLE, TX 1-800-903-6177

■ **TEXARKANA TRUCK CENTER**
 TEXARKANA, TX 1-866-940-8444

■ **TYLER TRUCK CENTER**
 TYLER, TX 1-877-600-2575

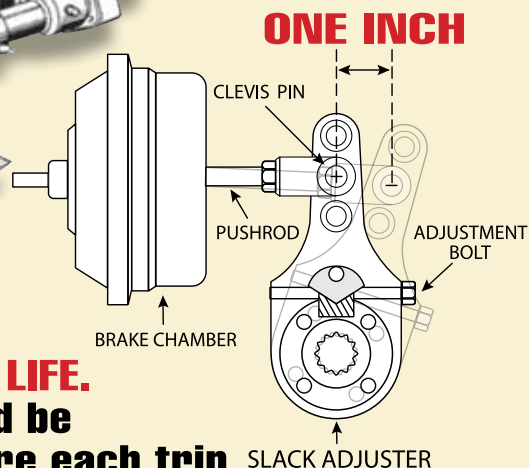
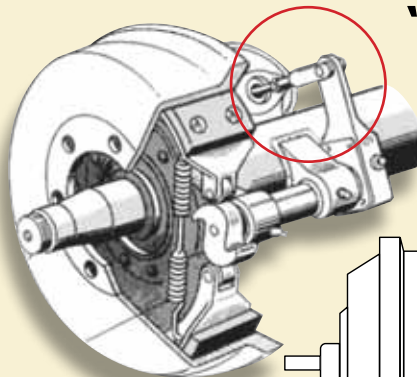
■ **(NEW) WACO**
FREIGHTLINER - WESTERN STAR
 WACO, TX 1-888-700-9735

■ **WICHITA FALLS**
FREIGHTLINER - WESTERN STAR
 WICHITA FALLS, TX 1-800-903-0322

Within an inch of your life!

IF BRAKE SLACK EXCEEDS ONE INCH YOU COULD BE DRIVING A "KILLER TRUCK"

Source: USDOT



THIS IS THE MOST IMPORTANT INCH OF YOUR LIFE.

Brakes should be checked before each trip and more frequently in hilly areas.

TRUCKERS! Poorly adjusted brakes could cost you time and money with out-of-service violations, jeopardize your safety and that of others due to impaired stopping ability, and even cost you your life. The only way to be sure that your vehicle's brakes are properly adjusted is to physically check each wheel on a regular schedule. It is difficult for you to sense, simply from pedal feel, that your brakes are out of adjustment. Under normal braking conditions your brakes may respond satisfactorily, but under a hard or panic stop, you may find that you are unable to stop in time.

Source: USDOT

Lonestar Truck Group Service Special

FREE BRAKE INSPECTION
 with any labor purchase over \$100.00

BRAKE INSPECTION INCLUDES:

- *Inspect slack adjusters (if applicable).*
- *Inspect front and rear brake shoes.*
- *Inspect brake drums or brake rotors.*
- *Inspect wheel seals.*
- *Inspect all brake hoses.*

If repairs are necessary, parts and labor will be at additional cost. Offer good through June 30, 2011.

Call any Lonestar location.

You drive... Leave the service to us.

June 2011

www.LonestarTruckGroup.com

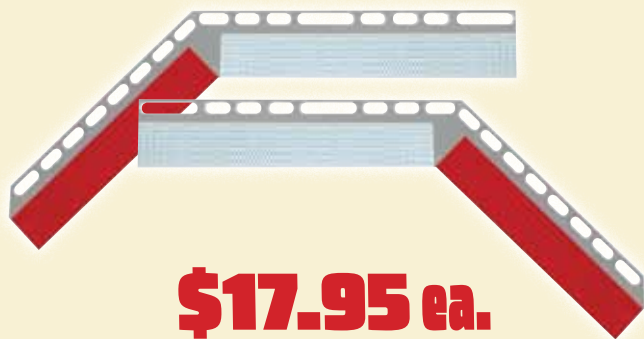
LONESTAR PARTS SPECIALS



SET-181704XN1161	BLACK/BLACK SEAT COVERS	\$49.95 EA.
SET-181704XN1162	BLACK/BLUE SEAT COVERS	\$49.95 EA.
SET-181704XN1165	BLACK/GREY SEAT COVERS	\$49.95 EA.
M42320R	L.E.D. STOP/TAIL/TURN 4" LAMP 32 L.E.D.s	\$14.95 EA.
M42322R	L.E.D. STOP/TAIL/TURN 4" LAMP 9 L.E.D.s	\$9.95 EA.
M50400B	4" BLACK VINYL GROMMET	\$1.49 EA.
M16280R	2-1/2" MARKER - 8 L.E.D.s	\$4.99 EA.
M50100B	2-1/2" BLACK VINYL GROMMET	\$1.29 EA.
V92-5549-020150	150' X 2" REFLECTIVE TAPE	\$79.95 EA.
GUN-AS1140	GUNITE AUTOMATIC SLACK ADJUSTER 5-1/2" ARM LENGTH 1-1/2" SPLINE DIA, 28 SPLINE	\$74.95 EA.
GUN-AS1141	GUNITE AUTOMATIC SLACK ADJUSTER 6" ARM LENGTH 1-1/2" SPLINE DIA, 28 SPLINE	\$74.95 EA.

PARTS PICTURES ARE FOR REFERENCE ONLY. ACTUAL PARTS MAY VARY.
Prices good through June 30, 2011

PARTS AND SERVICE SPECIALS:



\$17.95 ea.

BTS_RT35, Conspicuity Strips on Lightweight Aluminum. Reflective strips meet the FMVS standard for retro-reflective material; Designed to fit most angled down mud flap hangers.



\$14.95 ea.

BTS_RT25, Conspicuity Strips on Lightweight Aluminum,. Reflective strips meet the FMVS standard for retro-reflective material; Designed to fit most straight mud flap hangers.



\$9.95 ea.

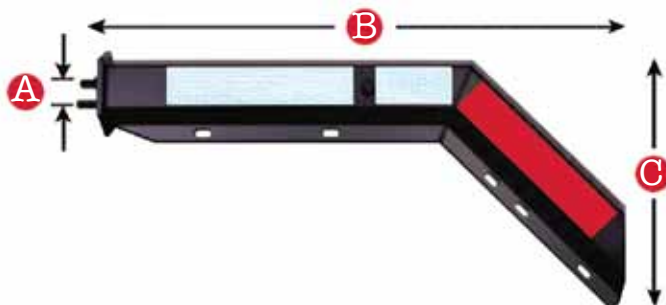
BTS_A35RL, Mud Flap Hangers, Angled to accommodate close hookups; Single hanger; Shot peened and painted black.



\$7.95 ea.

BTS_A25RL, Mud Flap Hangers, Straight; Single Hanger; Shot peened and painted black.

Mud Flap Hanger Special:



BTS-B67 Tube type hangers are Black Carbon Steel with reflective conspicuity strips. These hangers have set new standards for performance and durability, providing all the benefits of the straight arm style, but with additional clearance for landing gear.

SPECIAL PARTS PRICING

PER PAIR \$93.95

Installation Special:

SPECIAL LABOR PRICING

PER PAIR \$65.00

To Install A Pair Of Mud Flap Hangers & Mud Flaps Purchased At A Lonestar Truck Group Dealership. Labor Only. Offer Good Through June 30, 2011.



PICTURES ARE FOR REFERENCE ONLY AND MAY NOT BE IDENTICAL TO PRODUCT OFFERED. OFFERS GOOD THROUGH JUNE 30, 2011.

Lonestar Truck Group MANAGERS' SPECIALS



2007 Peterbilt 379 70 in Unibilt; ISX Cummins Engine 450 hp; Diesel; Ultrashift OD; Engine Brake; Air Ride Suspension; 3.55 Ratio; 24.5 LP Tires; Aluminum Wheels; 265 in Wheelbase, 481,000 Miles. (7N699431-ABL-1) **\$58,500**



2007 Freightliner CC13264 Coronado, 70 in Mid Roof Sleeper; Series 60 Detroit Engine 515 hp; Diesel; 13 Spd OD; Engine Brake; Air Ride; 3.42 Ratio; 22.5 Tires; Aluminum Wheels; 260" WB, 472,134 Miles. (7PY61875-ABQ-1) **\$69,074 \$62,900**



2010 Manac Dump, Spring Suspension; 32 ft Length; Frame; Half Round; Wood Floor; 11R 24.5 Tires; All Steel Wheels. (APO11031-BRY-TRL-1) **\$29,600**



2011 Freightliner Coronado, Detroit Diesel DD15, 475 HP, 10 SPD, Engine Brake, Tuff Trac Suspension, 227 Wheelbase, Air Brakes, Tire Size 24.5, Dual Locking Differentials, Aluminum Outers, Zero Miles. (BDAW9999-FAR-1) **\$119,500 \$119,000**



2004 Freightliner, CL12064ST Columbia 120, Series 60 Detroit Engine 470 hp; 10 Spd OD; Diesel; Engine Brake; Air Ride; 3.70 Ratio; 22.5 TALL Tires; All Steel Wheels; 171" WB; Tandem Axle; 581,000 Miles. (4LM09963-SAN-1) **\$29,500**



2007 Sterling LT 9500 Tractor, Mercedes MBE4000, 10 Spd, Air Ride Suspension, 24.5 Tires, Aluminum Front Wheels, Steel Rear Wheels, 240,120 Miles. (7AX44104-SHV-1) **\$39,500**



2011 Freightliner Business Class M2 112, DD 13 Detroit Engine 450 hp; 10 Spd OD; Diesel; Engine Brake; 4 Bag Air Ride Suspension; 3.73 Ratio; LP 22.5 Tires; 175 in Wheelbase, New. (BDAW8771-TEM-1) **\$99,750**



2012 Western Star 4900 Day Cab, Detroit Diesel DD13. 450 HP, 10 Spd, Air Ride Suspension, 200" Wheelbase, 24.5 Tires, Aluminum Front Wheels, Steel Rear Wheels, 5 Yr/500K Engine Warranty, New. (CPBD5778-TXK-1) **\$120,451**



2004 Freightliner CL12064ST Columbia 120, 12.7 Detroit Engine 375 hp; 10 Spd OD; Diesel; Air Ride Suspension; 3.70 Ratio; 22.5LP Tires; All Steel Wheels; 166 in Wheelbase; Single Axle; 533,430 Miles. (4LN05763-TYL-1) **\$25,000 \$23,000**



2007 Freightliner CL12064ST Century 120, 70 in Raised Roof Condo; 14.0 Detroit Engine 500 hp; Diesel; 10 Spd OD; Engine Brake; Air Ride Suspension; 3.42 Ratio; 22.5 Tires; All Aluminum Wheels; 230 in Wheelbase; Tandem Axle, 534,365 Miles. (7LW48665-WAC-1) **\$43,500**



2007 Freightliner CL120, Detroit Diesel DDC 14.0, 515 HP, 13 Spd, 72" Raised Roof Sleeper, Engine Brake, Air Ride, 230" Wheelbase, 24.5 LP Tires, Virgin Rubber, Aluminum Wheels, Air Brakes, 577,000 Miles. (7DY20431-WFF-1) **\$39,900**



2006 Kalyn Lowboy 48'x102" AirRide, Apitong Floor, 53'x102" 25' well, 136" neck, 22' Loaded deck ht outriggers, D-rings for stinger/flip Rear axle lift, 22.5 tires Alum outsiders, Raise/lower valve, Digital Air Scale (61002469-TYL-TRL-1A) **\$55,000**

Lonestar Truck Group is your place for quality used trucks.



2007 Freightliner CST12064 Century 120, DDC 14.0 Detroit Engine 455 hp; 10 Spd OD; Diesel; Engine Brake; Air Ride Suspension; 3.70 Ratio; 22.5 LP Tires; All Steel Wheels; 171 in Wheelbase, 717,000 Miles. (7LX77661-ABL-2) **\$34,500**



2011 CTS Trailer Spec Grain Hauler/Hopper, 40ft Length x 96 in Width; 11R24.5 Tires; All Steel Wheels. (BS000211-ABL-TRL-3) **\$25,000**



2004 Sterling AT9500, MBE4000 Mercedes Engine 410 hp; 10 Spd OD; Diesel; Engine Brake; Air Ride; 3.90 Ratio; 22.5 Tires; All Aluminum Wheels; 180" WB; Tandem Axle; 445,490 Miles. (4AM18601-ABQ-2) **\$28,275**



2007 Peterbilt 379EXHD, 70 in Ultracab Unibilt; ISX Cummins Engine 530 hp; Diesel; 18 Spd OD; Engine Brake; Air Ride; 3.36 Ratio; 24.5 Tires; Aluminum Wheels; 270" WB; Tandem Axle, 603,000 Miles. (7D679060-ABQ-3) **\$71,475 \$69,900**



2011 Western Star 4900SA, DD 13 Detroit Engine 450 hp; 10 Spd OD; Diesel; Engine Brake; Air Ride Suspension; 3.55 Ratio; 11R 24.5 Tires; Aluminum/Steel Wheels; 200 in Wheelbase; Tandem Axle. New (8LY44929-BRY-2)



2004 Freightliner CL120 Columbia, 58" Mid Roof Sleeper, Caterpillar C12, 430 HP, 10 Spd, Air Ride Suspension, Engine Brake, 24.5 Tires, All Aluminum Wheels, 626,450 Miles. (4LM99775-BRY-3) **\$24,965.**



2011 Western Star 4900FA, Detroit DD15, 505 hp; 13 Spd; Diesel; Engine Brake; AirLiner Susp; 4.10 Ratio; 24.5 Tires; Aluminum/Steel Wheels; 230" WB; 14,600 lb Front Axle Weight; 46,000 lb Rear Axle Weight. New (8PBD1894-FAR-2)



2011 Western Star 4900SA, Detroit 450 hp; 13 Spd; Diesel; Engine Brake; AirLiner Susp; 4.11 Ratio; 24.5 Tires; Aluminum/Steel Wheels; 210 in WB; 14,600 lb Front Axle Weight; 46,000 lb Rear Axle Weight. New. (8PBD1891-FAR-3)



1994 Fontaine (Qty 3) Flatbed, 4' x 102", Steel Wheels, 11R22.5 Tires, Air Ride Suspension, Hardwood Floor, Excellent trailers for the money. Good brakes and drums, decent rubber. (R1562228-SAN-TRL-2) **\$8,500**



2006 Transcraft, 48' Length x 102" Width, Step Deck With Rear Ramps, Drop Deck, Spring Suspension; Wood Floor; 22.5 Tires; All Steel Wheels; Fixed Tandem Axle; Steel Composition. (61081452-SAN-TRL-3) **\$18,500**



2008 Freightliner Century, Detroit Diesel DDC 14.0, 475 HP, 10 Spd, 70" Raised Roof Sleeper, Air Ride Suspension, 230" Wheelbase, 22.5 Tires, All Aluminum Wheels, 554,340 Miles. (8LY44927-SHV-2)



2005 International DT466, 210 HP, Allison Automatic Transmission, 24' Flat Bed, Spring Suspension, 254" Wheelbase, 22.5 LP Tires, Steel Wheels, 172,110 Miles. (5H119781-SHV-3)

See a complete inventory of new and used trucks and trailers online at: www.LonestarTruckGroup.com

Many models & colors to choose from.



2005 Freightliner CL12064ST Columbia 120, 14 Detroit Engine 430 hp; 10 Spd OD; Diesel; Engine Brake; Air Ride; 3:70 Ratio; 11R 22.5 Tires; All Steel Wheels; 171 in Wheelbase; Tandem Axle; 475,000 Miles. (5LU13032-TEM-2)



2008 Freightliner CL12064ST Century 120, 70 in Raised Roof Condo; 14.0 Detroit Engine 500 hp; Diesel; 10 Spd OD; Engine Brake; Air Ride; 3.42 Ratio; 22.5 Tires; All Aluminum Wheels; 230 in WB; Tandem Axle, 391,000 Miles.(8LW48815-TEM-3)



2007 Freightliner CL120, 70" Mid Roof Sleeper, DDC 14.0, 475 HP, 10 Spd. Air Leaf Suspension, 230" Wheelbase, 24.5 LP Tires, All Aluminum Wheels, 559,321 Miles. (7LX24149-TXK-2)



2007 Freightliner Coronado 132, 70" Raised Roof Sleeper, Detroit Diesel DDC 14.0. 515 HP, 13 SPD, Air Ride Suspension, 265" Wheelbase, All Aluminum Wheels, 680,339 Miles. (7PZ17354-TXK-3)



2007 Freightliner Century, Detroit Diesel DDC 14.0, 500 HP, 10 SPD, 70" Raised Roof Sleeper, Air Ride, 230" Wheelbase, 22.5 LP Tires, All Aluminum Wheels, Diesel Powered APU (Thermo king Tri Pac), 571,230 Miles. (7LY45284-TYL-2)



2005 Freightliner CL12064S Columbia 120, 14.0L Detroit Engine 455 hp; 10 Spd OD; Diesel; 4 Bag Air Ride Suspension; 3.70 Ratio; 22.5LP Tires; All Steel Wheels; 171 in Wheelbase; Tandem Axle, 552,312 Miles. (5LN76723-TYL-3)



2008 Freightliner CA125 Cascadia, Detroit Diesel DDC 14.0, 500 HP, 10 Spd, 70" Sleeper, Air Ride Suspension, Engine Brake, 22.5 LP Tires, Virgin Rubber, All Aluminum Wheels, Diesel Powered APU, 478,000. (8LW48768-WAC-2)



2011 Western Star 4900SA, DD 13 Detroit Engine 450 hp; 10 Spd OD; Diesel; Engine Brake; Air Ride Suspension; 3.55 Ratio; 11R 24.5 Tires; Aluminum/Steel Wheels; 200 in Wheelbase; Tandem Axle. (BDBD9799-WAC-3)



2012 Freightliner CC12264 Coronado SD, Detroit 505 hp; Hard to find small sleeper truck. Stainless steel visor. LED lighting. Dual 100 gallon tanks. All aluminum wheels.; 6x4, New. (CDBE7384-WFF-2)



2007 Freightliner CL12064ST Columbia 120, 70 in Raised Roof Condo; Detroit 490 hp; Diesel; 10 Spd OD; Engine Brake; Air Ride; 3.42 Ratio; 24.5LP Tires; All Aluminum Wheels; 235 in Wheelbase; Tandem Axle; 471,000 Miles. (7LX50736-WFF-3)



1998 Galyean 4-Bunk Log, Spring Suspension; 40 ft Length; 24.5 Tires; Steel Disc Wheels; Fixed Tandem Axle; Steel Composition; Call for more details. (WHO15604-TXK-TRL-3b) **\$10,000**



2001 Hyundai Dry Van (Qty: 5) Air Ride; 53' L x 102" W x 13'6" H; Swing Door; Wood Floor; 22.5 Tires; Steel Wheels; Sliding Tandem Axle; Air slide, Aluminum Roof. (IT085110-SHV-TRL-3b) **\$7,500**

Lonestar Truck Group
2051 Hughes Road
Grapevine, TX 76051

PRESORT STANDARD
U S POSTAGE
PAID
GLOBAL MAIL

RETURN SERVICE REQUESTED



**Your one-stop source
for truck and trailer
sales, parts and service.**

SMART
PHONE?
SCAN ME
FOR FULL
INVENTORY



www.LonestarTruckGroup.com

LS-1262 InGear Newsletter

©Lonestar Truck Group, June 2011

Your on-line source for 100's of USED TRUCKS & TRAILERS



www.LonestarTruckGroup.com

We sell and buy all makes and models.
Many late models currently in stock, including
box vans, vocational trucks and various sleepers:

**Raised Roofs - Mid Roofs - Day Cabs.
Trailers - Flat Beds - Drop Decks - Low
Boys - Reefers - Dry Vans - Belly Dumps
Online Inventory Search to assist you...**

Or you can call any of our 11 dealers where one of our professional sales
staff will help you find exactly what you need. Lonestar Truck Group used trucks and
trailers are thoroughly inspected by our service department before being offered for sale.

Trades are welcome at our 11 Full Service Locations! Lonestar Truck Group

