

InGear



LONESTAR
TRUCK GROUP



WESTERN STAR

***Your one-stop
source for
truck sales,
parts & service.***

30 New 2011 Western Star White Day Cab Tractors Now In Stock or On the Way.

- DD15 Detroit Diesel 505 HP.
- DD13 Detroit Diesel 450 HP.
- 109" BBC and 123" BBC (bumper-to-back-of-cab) Conventional Cabs.
- Set Forward and Set Back Front Axle models In stock.
- 14,600 lb Front Axles - 40,000 and 46,000 lb Rear Axles.
- 10 Speed and 13 Speed Eaton Transmissions.
- Air Ride Rear Suspensions.
- Air Slide 5th Wheels.
- 200 inch to 220 inch Wheel Bases.
- Dual 100 Gallon Fuel Tanks.
- Powerful, durable, quiet cab.
- Widest cabs in the industry.

**These trucks will
sell out quickly.**

Don't be left out. Call Today!



109" BBC



123" BBC

LonestarTruckGroup.com



LONESTAR TRUCK GROUP

■ **CORLEY-WETSEL**
FREIGHTLINER - WESTERN STAR
 ABILENE, TX 1-800-535-0826

■ **ALBUQUERQUE**
FREIGHTLINER - WESTERN STAR
 ALBUQUERQUE, NM 1-800-535-6470

■ **BRYAN**
FREIGHTLINER - WESTERN STAR
 BRYAN, TX 1-866-727-9222

■ **FARMINGTON**
FREIGHTLINER WESTERN STAR
 FARMINGTON, NM 1-800-535-9031

■ **CORLEY**
FREIGHTLINER - WESTERN STAR
 SAN ANGELO, TX 1-800-901-9973

■ **SHREVEPORT TRUCK CENTER**
 SHREVEPORT, LA 1-877-700-9955

■ **TEMPLE**
FREIGHTLINER - WESTERN STAR
 TEMPLE, TX 1-800-903-6177

■ **TEXARKANA TRUCK CENTER**
 TEXARKANA, TX 1-866-940-8444

■ **TYLER TRUCK CENTER**
 TYLER, TX 1-877-600-2575

■ **(NEW) WACO**
FREIGHTLINER - WESTERN STAR
 WACO, TX 1-888-700-9735

■ **WICHITA FALLS**
FREIGHTLINER - WESTERN STAR
 WICHITA FALLS, TX 1-800-903-0322

FREE COOLING SYSTEM CHECK

Your trained service technician will perform the following:

- PH test the coolant.
- Check protection level of the coolant.
- Check the system for condition of belts, hoses and visually check for leaks.
- Inspect condition of radiator mounts.

Get peace of mind knowing your truck's cooling system is in good working order... And get it for FREE!



If repairs are necessary, parts and labor will be at additional cost.
 Offer good through March 31, 2011

SERVICE SATISFACTION... is standard equipment at Lonestar!

March 2011 **LONESTAR** **Air Conditioning Season PARTS SPECIALS**



ABP-N83-304061T	A/C COMPRESSOR Tube-0 Upright w/o Clutch	197.95
ABP-N83-304101T	A/C COMPRESSOR Upright w/ 2 Groove Clutch	249.95
ABP-N83-304543	SANDEN ROTARY COMPRESSOR Poly-V Clutch	164.95
ABP-N83-304543S	SANDEN ROTARY - W/CLUTCH Super Duty Rotary Clutch	199.95
ABP-N83-319744	RECEIVER DRYER 3" X 10-1/4" # 6 Male "O" Ring High Capacity	29.95
ABP-N83-319614	RECEIVER DRYER 3" X 10" # 6 Male Inlet / # 6 Female Outlet	24.95
ABP-N83-303002T	COMPRESSOR CLUTCH 6-3/4" Single Groove, Single Wire	74.95
ABP-N83-303123T	COMPRESSOR CLUTCH 6-1/8" 2-Groove, Poly-V-Groove, 2-Wire	79.95
ABP-N83-301017	BLOWER MOTOR ASSEMBLY Plate Mount, 12V, 2-Wire Plug	89.95
ABP-N83-326050	12 OUNCE ESTER OIL	8.95
ABP-N83-308375	BLOCK EXPANSION VALVE	25.95
ABP-N83-328345	FRAMED AIR FILTER 10-1/2" 10-1/2" x 3/4"	17.95
ABP-N83-318179	DUAL FUNCTION SWITCH 2-Prong	12.95

**A/C Parts Available for All Makes and Models of Trucks.
R134A Freon - In Cans and Cylinders Available. Call for Quote**

**PARTS PICTURES ARE FOR REFERENCE ONLY. ACTUAL PARTS MAY VARY.
Prices good through March 31, 2011**

BULK PARTS PRICING: **Save Big on A/C** **Parts for all makes!**

Lonestar bought large quantities of these part numbers. We are passing the bulk cost savings on to you, when you buy 5 or more of any one item. Offer expires after 3/31/11.



A/C COMPRESSOR
Tube-0 Upright w/o Clutch
ABP-N83-304061T
\$184.95 ea.

A/C COMPRESSOR
Upright w/ 2 Groove Clutch
ABP-N83-304101T
\$229.95 ea.



SANDEN ROTARY COMPRESSOR
Poly-V Clutch
ABP-N83-304543
\$149.95 ea.



SANDEN ROTARY - W/CLUTCH
Super Duty Rotary Clutch
ABP-N83-304543S
\$179.95 ea.

COMPRESSOR CLUTCH 6-1/8"
2-Groove,
Poly-V-Groove, 2-Wire
ABP-N83-303123T
\$72.95 ea.



RECEIVER DRYER
3" X 10"
6 Male Inlet /
6 Female Outlet
ABP-N83-319614
\$22.95 ea.



EXPANSION VALVE BLOCK
ABP-N83-308375
\$22.95 ea.

LONESTAR LABOR SPECIAL



MAINTENANCE SPECIAL

- **SYSTEM OPERATION & PERFORMANCE TEST** ■
- **CHARGE TEST** ■
- **LEAK DETECTION** ■
- **BELT INSPECTION** ■

\$99.95



REPAIRS ARE EXTRA. IF NEEDED, YOU MAY REQUEST AN ESTIMATE FOR PARTS & LABOR. OFFER GOOD THROUGH MARCH 31, 2011.

www.LonestarTruckGroup.com

Lonestar Truck Group MANAGERS' SPECIALS



2005 Freightliner FLD13264T Classic XL, 70 in Raised Roof Condo; C15 Caterpillar Engine 450 hp; 13 Spd OD; Engine Brake; Air Ride Suspension; 3.55 Ratio; 22.5 LP Tires; Aluminum Wheels; 260 in Wheelbase, 750,000 Miles. (5DN44654-ABL-1) **\$26,500**



2005 Freightliner M2 106, Standard Cab; C7 Cat Diesel 210 hp; 6 Spd; Spring Susp; 4.11 Ratio; 22.5 Tires; All Steel Whls; 272" WB; Single Axle; 21,000# Rear Axle Wt; 12,000# Front Axle Wt, 116,180 Miles. (5HU38664-ABQ-1) ~~\$28,900~~ **\$24,900**



2007 Freightliner C12064ST Century 120, 70 in Raised Roof Condo; 14 Detroit 500 hp; Diesel; 10 Spd OD; Engine Brake; Air Ride; 3:42 Ratio; LP 22.5 Tires; All Aluminum Wheels; 230 in Wheelbase; 474,000 Miles. (7LW48478-BRY-1) **\$48,500**



2009 Freightliner M2 106, Cab Chassis, Cummins ISC, 300 HP, 10 Speed, Engine Brake, Spring Susp, 254" WB, Roustabout Bed with Winch, Poles and Tailroller, 22.5 Tires, Steel Wheels, Air Brakes, Zero Miles. (9HAH8898-FAR-1) ~~\$107,500~~ **\$99,400**



1996 Freightliner FLD112, Cummins, 330 HP, 10 Spd, 4 Spring Suspension, Air Brakes, 24.5 Tires, Aluminum Front Wheels, Steel Wheels Rear. (870032-SAN-1) **\$6,995.00**



2001 International 4900 Dry Cargo Van; DT466 Intl. Eng. 195 hp; Diesel; 6 Spd; Spring; 26 ft Length x 102 in Width; Lift End Gate; Roll up Door; 22.5LP Tires; All Steel Wheels; 272" WB; Single Axle, 264,321 Miles. (1H368396-SHV-1) ~~\$12,000~~ **\$10,000**



2005 Freightliner CL12064ST Columbia 120, 70 in Raised Roof Condo; 14 Detroit Engine 470 hp; 13 Spd OD; Engine Brake; Air Ride; 3:73 Ratio; 24.5 LP Tires; All Aluminum Wheels; 240 in WB, 690,000 Miles. (5LU85755-TEM-1) **\$29,500**



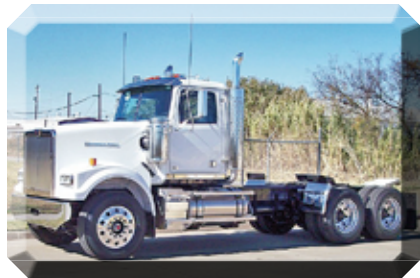
2009 Freightliner Cascadia 125, Mercedes MBE4000, 10 Spd, Engine Brake, Air Ride Suspension, 220" Wheel Base, 22.4 LP Tires, All Aluminum Wheels, Air Brakes, Pre 2010 Emissions, Save Thousands. (9LAJ4523-TXK-1) ~~\$94,000~~ **\$89,900**



2004 Freightliner Columbia CL120, Detroit Diesel DDC 14.0, 500 HP, 10 Spd, Exhaust Brake, Air Ride Suspension, 22.5 LP Tires, All Aluminum Wheels. (4LM99485-TYL-1) ~~\$24,500~~ **\$20,000**



2011 Freightliner Business Class M2 106, ISC Cummins 350HP; Diesel; Automatic; Air Ride; 24 ft Length x 102 in Width; Roll up Door; 5.29 Ratio; LP 22.5 Tires; All Steel Wheels; 252" WB, Tandem Axle; Carrier Reefer; Insulated, 25,000 Miles. (BDAW6291-WAC-1) **\$116,875**



2011 Western Star 4900FA, Detroit DD15, 505 HP, 10 Spd, Engine Brake, Air Ride Suspension, 220 WB, 24.5 Tires, All Aluminum Wheels, Air Brakes, (BPBA5719-WFF-1) **\$118,910**



2009 Clark CFB2009 Flat Bed, Air Ride; 48 ft Length x 102 in Width; Wood Floor; 11R 24.5 Tires; All Steel Wheels; Tandem Axle; Steel Composition; Spread Axle Air Ride, Financing available W.A.C. (9A009774-TYL-TRL-1A) ~~\$24,800~~ **\$22,950**

www.LonestarTruckGroup.com

Lonestar Truck Group is your place for quality used trucks.



2006 Freightliner CL12064S Columbia 120, 70 in Mid Roof XT Sleeper; DDC 14.0 Detroit Engine 455 hp; 10 Spd OD; Engine Brake; Air Ride Suspension; 2.62 Ratio; 22.5 LP Tires; Aluminum/Steel Wheels; 230" WB, 652,662 Miles. (6LN84364ABL-2) \$34,900



2005 Freightliner CST120 Century Tractor, Detroit DDC 14.0, 455 HP, 70" Midroof, 10 SPD, Air Ride Suspension, Wheelbase 232", 22.5 LP Tires, Aluminum Front Wheels, Steel Rear Wheels, 762,000 Miles. (5LM61824-ABL-3) \$28,500



2006 Freightliner CST12064 Century 120, Double Deck Condo; Series 60 Detroit 505 hp; Diesel; 10 Spd OD; Engine Brake; Air Ride; 3.73 Ratio; 22.5 Tires; All Steel Wheels; 232 in WB, 608,034 Miles. (6PV86087-ABQ-2) \$36,900-\$28,900



2005 Freightliner CL120 Columbia, Detroit Diesel DDC 14.0, 435 HP, 10 Spd, Engine Brake, Air Ride Suspension, 232" Wheelbase, 22.5 Tires, All Aluminum Wheels, 783,539 Miles. (5LM94716-ABQ-3) \$29,900 \$26,900



2005 Freightliner CL12064ST Columbia 120, 14.0 Detroit Engine 470 hp; 10 Spd OD; Diesel; Engine Brake; Air Ride Suspension; 3.70 Ratio; 11 R 22.5 Tires; Steel Disc Wheels; 171 in Wheelbase, 606,000 Miles. (5LU94874-BRY-2)



2011 Freightliner CA12564SLP Cascadia, 72 in RR Condo; DD 15 Det 455HP; 500 mi; 10 Spd OD; Eng. Brake; Air Ride; 3.42 Ratio; LP 22.5 Tires; Aluminum Wheels; 232 " WB; 13,300 lb Front Axle Wt; 40,000 lb Rear Axle Wt. New. (BSBD1638-BRY-3)



2011 Freightliner Coronado, Detroit Diesel DD15, 475 HP, 10 SPD, Engine Brake, Tuff Trac Suspension, 227 Wheelbase, Air Brakes, Tire Size 24.5, Dual Locking Differentials, Aluminum Outers, Zero Miles. (BDAW9999-FAR-2)



2011 Western Star 4900SA, Detroit Diesel DD13, 450 HP, Tuff Trac Suspension, 220" Wheelbase, 24.5 Tires, Aluminum Front Wheels, Steel Rear Wheels, Zero Miles. (BPAZ8428-FAR-3)



2005 Sterling Acterra 6500, Cat 300HP; Diesel; 9 Spd OD; TuffTrac Susp; 22.5 Tires; Steel Disc Wheels; 190" WB; Semi Tank; 2,500 gal Capacity; 3.90 Ratio; 40,000# Rear Axle Wt; 13,220# Front Axle Wt, 150,000 Miles. (5AU05746-SAN-2)



2011 Viking Tandem & Triple Axle, Fixed Neck; Spring Susp; Wood Floor; All Steel Wheels; Fixed Tandem Axle; Steel Composition; Tandem axle 35 Ton, 100,000 Lb Capacity Equip. Trailer, 28'11" Deck Length with 46" Oal, Dove Tail & Ramps. (35 Ton New Viking-SAN-TRL-3)



2004 Freightliner CST12064ST Century 120, 70 in Condo; 14.0L Detroit 500 hp; Diesel; 10 Spd OD; Engine Brake; Air Ride; 3.58 Ratio; 22.5LP Tires; All Aluminum Wheels; 230 in Wheelbase; Tandem Axle, 549,534 Miles. (4LM69433-SHV-2)



2007 Transcraft Flat Bed, 48' x 102", Air Ride Suspension, Tandem Axle, 11R24.5 Tires, Aluminum Outer Wheels Only. Financing Available W.A.C. (72019688-SHV-TRL-3) \$17,500.

See a complete inventory of new and used trucks and trailers online at: www.LonestarTruckGroup.com

Many models & colors to choose from.



2001 Freightliner FLD12064ST, 12.7 Detroit Engine 470 hp; Diesel; 13 Spd; Engine Brake; Air Ride Suspension; 22.5 Tires; Aluminum/Steel Wheels; 230" WB; Tandem Axle; 15' Demo Dump bed, with full Pintle Hitch. (1PF95463-TEM-2)



2007 Freightliner CST12064ST Century 120, 70 in Raised Roof Condo; 14.0 Detroit 500 hp; Diesel; 10 Spd OD; Engine Brake; Air Ride; 3.42 Ratio; LP 22.5 Tires; Aluminum Wheels; 230" WB, 514,000 Miles. (7LW48219-TEM-3)



2005 Freightliner Columbia CL120, Mercedes MBE4000, 10 Spd, Exhaust Brake, Air Ride Suspension, 230" Wheelbase, 22.5 Tires, Aluminum Front Wheels, Steel Rear Wheels, 768,650 Miles. (5LU23237-TXK-2)



2005 Peterbilt 379EXHD, 63 in Stand Up Sleeper; C15 Caterpillar 475 hp; 13 Spd OD; Eng. Brake; Pete Flex Air Susp; 3.36 R; 22.5LP Tires; Alum. Wheels; 263 in WB; 12,000 lb Front Ax. Wt; 36,000 lb Rear Ax. Wt, 678,321 Miles. 5D837487-TXK-3



2004 International 4300, Standard Cab; DT466 International Engine 215 hp; 6 Spd; 4 Spring Suspension; 24 ft Length x 102 in Width; 11R 22.5 Tires; All Steel Wheels; 254" Wheelbase; Single Axle; 175,260 Miles. (4H672065-TYL-2)



2010 CPS End Dump, Spring Suspension; 32 ft Length; Frame; 11r24.5 Tires; 32" Half Round. Ar450 Material. Single Point Suspension. High Lift Tail Gate. Price includes FET. Financing Available W.A.C. (AP011086-TYL-TRL-3) **\$33,900**



2007 Freightliner CL12064ST Century 120, 70 in Raised Roof Condo; 14 Detroit 500 hp; 10 Spd OD; Engine Brake; Air Ride; 3:42 Ratio; LP 22.5 Tires; All Aluminum Wheels; 230 in Wheelbase; Tandem Axle, 430,500 Miles. (7LW48712-WAC-2)



2005 Freightliner CL11264ST Columbia 112, 14.0 Detroit Engine 430 hp; 10 Spd OD; Diesel; Engine Brake; Air Ride Suspension; 3:70 Ratio; 22.5 Tires; All Steel Wheels; 171 in Wheelbase; Tandem Axle. 475,000 Miles. (5LN65255-WAC-3)



2005 Freightliner Conventional , Detroit DDC 14.0, 455/490 HP, 10 Speed, Engine Brake, Air Ride Suspension, 183" Wheelbase 22.5 Tires, Steel Wheels, 597,751 Miles. (5LU68685-WFF-2)



2007 International 9900, Cummins ISX, 435 HP, 13 Spd, Engine Brake, Airride Suspension, 260" Wheel Base, 22.5 Tires, All Aluminum Wheels, Air Brakes, 599,330 Miles. (7C398278-WFF-3)



2010 Clark Flat Bed, Air Ride; 48 ft Length x 102 in Width; Apitong Floor; All Steel Wheels; Tandem Axle; Steel Composition; Air ride slide. Price includes FET. -0- Down with approved credit. (AA009844-TYL-TRL-2) **\$23,115**



2009 Manac CFB48 Flat Bed, Air Ride; 48'x102"; Aluminum Floor; 24.5LP Tires; Aluminum Outers; Tandem Axle; Comb. Composition; Sprd Axle, Cargo Hands, Chain Ties, Galv. Steel Cross Members. (9K010502-TYL-TRL-3b) **\$24,200 Incl. FET.**

Lonestar Truck Group
2051 Hughes Road
Grapevine, TX 76051

PRESORT STANDARD
U S POSTAGE
PAID
GLOBAL MAIL

RETURN SERVICE REQUESTED



**Your one-stop source
for truck and trailer
sales, parts and service.**

www.LonestarTruckGroup.com LS-1238 InGear Newsletter, ©Lonestar Truck Group, March 2011



YOUR INSURANCE OPTIONS at Lonestar Truck Group Dealerships

Protect yourself, your family and your trucking investment!

NO DOWN PAYMENT!

If you choose to finance your premiums.

NO RATE INCREASES!

for the duration of your finance agreement
if you choose to finance your premiums.

CONVENIENT!

Enjoy the convenience of "One Stop Shopping".

DRIVE YOUR INDEPENDENCE!

Insurance in your own name allows you to build
your own good loss history.

PRODUCT OPTIONS

■ **PHYSICAL DAMAGE** — Specified Perils or Comprehensive Coverage and Collision Coverage for your Truck or Trailer.

■ **TRUCK DELUXE** — Downtime or Rental Reimbursement, Towing & Storage Coverage, Personal Effects, Windshield Replacement (No Deductible)

■ **NON-TRUCKING LIABILITY** — (BOBTAIL) Coverage for Non-Business Use of a truck such as personal or non-economic purposes. Includes Bodily Injury & Property Damage Liability, Medical Payments Coverage and Uninsured/Underinsured Coverage

■ **GAP** — Coverage that protects your investment in the event of theft or a total loss. Covers the difference between your insurance company's settlement and the balance of your loan. You can rely on GAP to pay the difference. *(See policy Wording for Details)

■ **GAPplus** — GAPplus provides not only GAP Coverage, (As Described Above) but also pays you up to \$10,000 or 10% of the original vehicle price for a Class 8 and up to \$5,000 or 10% of the original price for a Class 3 – 7 Vehicle. This money can be used for Replacement vehicle down payment, Insurance Deductible, Sales Tax & License Fees, and Vehicle Price Increases.

■ **OCCUPATIONAL ACCIDENT** — Provides Accidental Death & Dismemberment, Accidental Medical Expense, Temporary Total Disability, and Continuous Total Disability Benefits with Aggregate and Combined Single Limit in any one accident of up to \$1,000,000. (Direct Billed Monthly)

