



LONESTAR
TRUCK GROUP



inGear

***Your one-stop
source for
truck sales,
parts & service.***

Turn Your Off-Line Trucks and Trailers into CASH

We Buy Trucks!

The Lonestar Truck Group is always looking for good used heavy duty trucks and vocational type trailers.

WE BUY OWNER/OPERATOR TRUCKS OR FLEET GROUP TRUCKS — ANY QUANTITY, MAKE, MODEL OR YEAR.

If you have equipment not currently in use and would like to convert it to a cash asset, contact your local Lonestar Truck Group sales department.



Call any Lonestar location.

You drive... Leave the service to us.



■ **CORLEY-WETSEL
FREIGHTLINER - WESTERN STAR
ABILENE, TX 1-800-535-0826**

■ **ALBUQUERQUE
FREIGHTLINER - WESTERN STAR
ALBUQUERQUE, NM 1-800-535-6470**

■ **BRYAN
FREIGHTLINER - WESTERN STAR
BRYAN, TX 1-866-727-9222**

■ **FARMINGTON
FREIGHTLINER WESTERN STAR
FARMINGTON, NM 1-800-535-9031**

■ **CORLEY
FREIGHTLINER - WESTERN STAR
SAN ANGELO, TX 1-800-901-9973**

■ **SHREVEPORT TRUCK CENTER
SHREVEPORT, LA 1-877-700-9955**

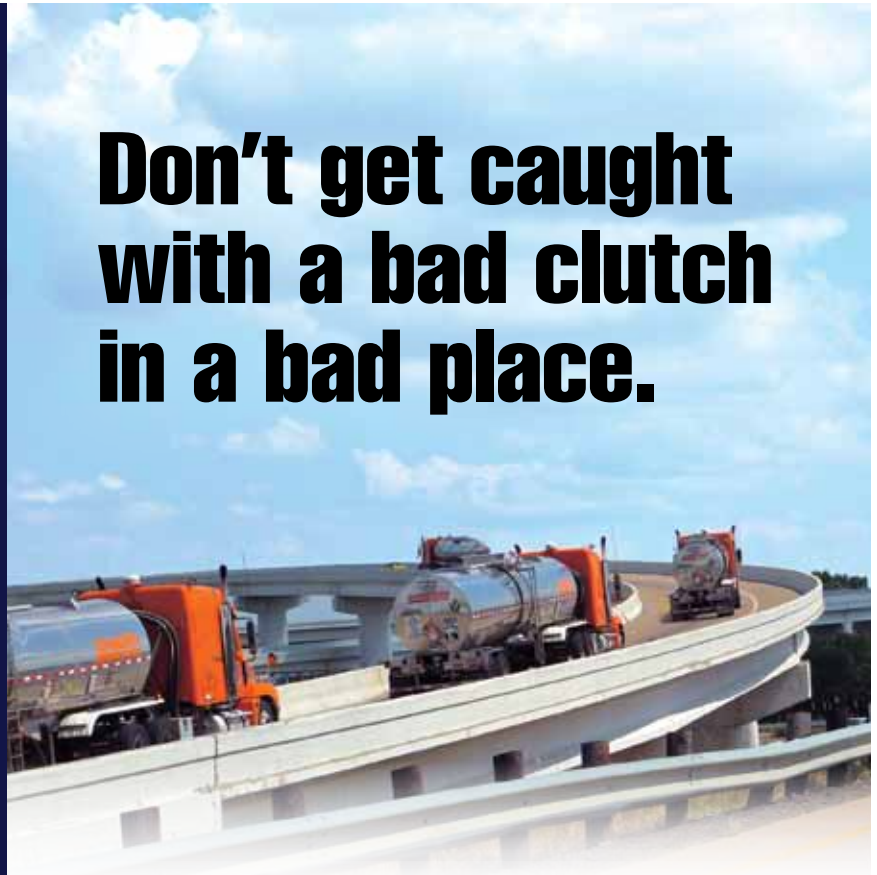
■ **TEMPLE
FREIGHTLINER - WESTERN STAR
TEMPLE, TX 1-800-903-6177**

■ **TEXARKANA TRUCK CENTER
TEXARKANA, TX 1-866-940-8444**

■ **TYLER TRUCK CENTER
TYLER, TX 1-877-600-2575**

■ **(NEW) WACO
FREIGHTLINER - WESTERN STAR
WACO, TX 1-888-700-9735**

■ **WICHITA FALLS
FREIGHTLINER - WESTERN STAR
WICHITA FALLS, TX 1-800-903-0322**



**Don't get caught
with a bad clutch
in a bad place.**

- **Come in for a CLUTCH ADJUSTMENT or a REPLACEMENT if needed.**
- **Clutch replacement ESTIMATE for your truck is available at time of service.**
- **We service and replace all makes.**

Clutch Adjustment

\$45.00

If repairs are needed you may request an estimate for parts and labor. REPAIRS ARE EXTRA. — OFFER GOOD THROUGH FEB 28, 2011.

SERVICE SATISFACTION... is standard equipment at Lonestar!

February 2011

LONESTAR PARTS SPECIALS



Stock Number	Description	\$ Price Each
KFE-440161	Fire Extinguisher 10-B:C	17.95
KFE-466425	Fire Extinguisher 3-A: 10-BC	38.95
MLT-2042-30	4"x 30' Winch Strap with Flat Hook	8.95
MLT-5822-30	2"x30' Ratchet Strap with Flat Hook	11.95
MLT-4228	5/16"-3/8" Lever Binder	13.95
ABP-N49-5FT18G	5"x18" Galvanized Flex Pipe	9.95
ABP-N49-5FT24G	5"x24" Galvanized Flex Pipe	11.95
ABP-N35-50PLA	5" Aluminized Pre-Form Exhaust Clamp	5.49
ABP-N35-50PLS	5" Stainless Steel Pre-Form Exhaust Clamp	6.95
ABP-N35-50EST	5" Stainless Steel Easyseal Flat Exhaust Clamp	5.95
MLT-4456-20-F	5/16"x20' Chain with Clevis Hooks	24.99

PARTS PICTURES ARE FOR REFERENCE ONLY. ACTUAL PARTS MAY VARY.
Prices good through February 28, 2011

PARTS SPECIAL**Make It
Mascot****\$50 Rebate****Available on Remanufactured
Transmissions and Differentials
for Heavy-Duty Truck Professionals**

Purchase a Mascot Reman Transmission or Differential and obtain a Mascot *\$50 Rebate Coupon from your Lonestar Truck Group parts or service manager.

**LONESTAR
TRUCK GROUP**

*Terms and conditions apply.

**LONESTAR LABOR SPECIAL****FREE Drivetrain Inspection**

- ✓ Inspection of Steering Axle
- ✓ Inspection of all Drive Axle(s)
- ✓ Inspection of all Drive Shafts
- ✓ Inspection of all U-Joints
- ✓ Inspection of Steering components
- ✓ Inspection of King Pins
- ✓ Inspection of Tie Rod
- ✓ Inspection of Pitman Arm
- ✓ Inspection of Wheel Bearings
- ✓ Inspection of Wheel Seals
- ✓ Inspection of Transmission / Operation / Leaks
- ✓ Inspection of Springs / Hangers / Bushings

Note:

The drivetrain inspection is a visual inspection of all drivetrain and steering components excluding engine or engine related items. The inspection does not include repairs or parts. Offer good through February 28, 2011.

www.LonestarTruckGroup.com

Lonestar Truck Group MANAGERS' SPECIALS



2006 Freightliner CC13264 Coronado, 70" Raised Roof Sleeper; DDC 14.0 Detroit Engine 500 hp; 10 Spd OD; Engine Brake; Air Ride; 3.58 Ratio; 22.5 LP Tires; Aluminum Wheels; 260 in Wheelbase, 721,816 miles. (6PV72525-ABL-1) ~~\$37,500~~



2005 Freightliner M2 106, C7 Cat 210 hp; Auto-OD; Spring Susp; 26 ft Length; Lift End Gate; Roll up Door; 5.29 Ratio; 22.5 Tires; Steel Wheels; 270" WB; 19,000# Rear Axle; 8,000# Front Axle, 104,011 miles. (5HU28997-ABQ-1) ~~\$33,900~~ **\$29,999**



2007 Freightliner CL12042ST Columbia 120, Mid Roof XT Sleeper; DIESEL Detroit Engine 515 hp; Diesel; 10 Spd; Engine Brake; Air Ride Suspension; Aluminum Wheels; Tandem Axle, 476,900 Miles. (7LW29101-BRY-1) ~~\$39,500~~



2009 Freightliner M2 106, Cab Chassis, Cummins ISC, 300 HP, 10 Speed, Engine Brake, Spring Susp, 254" WB, Roustabout Bed with Winch, Poles and Tailroller, 22.5 Tires, Steel Wheels, Air Brakes, Zero Miles. (9HAH8898-FAR-1) ~~\$107,500~~ **\$99,900**



2004 Freightliner Business Class M2 106 Winch Truck, Diesel Caterpillar Engine 190 hp; 6 Spd; Spring Susp; 4.11 Ratio; 22.5 Tires; Steel Disc Wheels; Single Axle; 15 ft Length; 17,500 lb Rear Axle Weight; 8,000 lb Front Axle Weight; 133,000 Miles. (Blue/Silver Bed-SAN-1) ~~\$46,995~~



2004 Columbia CL120, Detroit DDC14.0, Exhaust Brake, Air Ride Suspension, 230" Wheelbase, 22.5 LP Tires, All Aluminum Wheels. (4LM99484-SHV-1) ~~\$24,500~~ **\$23,000**



2009 Manac Flat, Air Ride Suspension; 48 ft Length x 102 in Width; 24.5 Tires; Aluminum Wheels; Tandem Axle; Combination Composition; Nice flatbed. (9K010504-TEM-TRL-1) ~~25,950~~ **\$23,435**



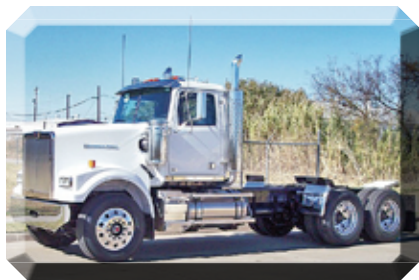
2009 Freightliner Cascadia 125, Mercedes MBE4000, 10 Spd, Engine Brake, Air Ride Suspension, 220" Wheel Base, 22.4 LP Tires, All Aluminum Wheels, Air Brakes, Pre 2010 Emissions, Save Thousands. (9LAJ4523-TXK-1) ~~\$94,000~~ **\$89,900**



2005 Peterbilt 379EXHD, 70 in Ultra Sleeper; C15 Caterpillar 475 hp; Diesel; 18 Spd OD; Engine Brake; Pete Flex Air Susp; 24.5 Tires; Aluminum Wheels; 270 in WB, 843,212 Miles. (5N855059-TYL-1) ~~\$42,500~~ **\$41,000**



2006 Freightliner CL12064ST Columbia 120, 14.0 Detroit Engine 515 hp; 10 Spd OD; Diesel; Engine Brake; Air Ride Suspension; 3.70 Ratio; LP 22.5 Tires; Aluminum Outside Wheels; 232 in Wheelbase; 496,210 Miles. (6PV48978-WAC-1) ~~\$42,500~~ **\$39,500**



2011 Western Star 4900FA, Detroit DD15, 505 HP, 10 Spd, Engine Brake, Air Ride Suspension, 220 WB, 24.5 Tires, All Aluminum Wheels, Air Brakes, (BPBA5719-WFF-1) ~~\$118,910~~



2011 Reitnauer Flat, (Qty: 2) Air Ride Suspension; 48 ft Length x 102 in Width; Aluminum Floor; 24.5 Tires; Aluminum Wheels; Tandem Axle; Aluminum Composition. (TYL-TYL-TRL-1A) ~~\$34,472~~

Lonestar Truck Group is your place for quality used trucks.



2006 Freightliner FLD12064m MBE4000 Mercedes Engine 450 hp; 10 Spd OD; Engine Brake; Air Ride Suspension; 3.73 Ratio; 22.5 Tires; Aluminum/Steel Wheels; 206 in Wheelbase; 462,795 miles. (6DW93203-ABL-2) **\$41,900**



2005 Freightliner CST120 Century Tractor, Detroit DDC 14.0, 455 HP, 70" Midroof, 10 SPD, Air Ride Suspension, Wheelbase 232", 22.5 LP Tires, Aluminum Front Wheels, Steel Rear Wheels, 762,000 Miles. (5LM61824-ABL-3) **\$28,500**



2010 Freightliner Sprinter 2500, Mercedes 3.0L V6 Diesel 188, 5 Speed Automatic Transmission, Spring Suspension, 144" Wheelbase Hydraulic Brakes, 16.0 Tires, Steel Wheels, 5 Year/100K Warranty, Zero Miles. (A5430700-ABQ-2)



2011 Western Star 4900 EX, DD15 Detroit 505 hp; 10 Spd OD; Diesel; Engine Brake; Air Ride; 3.58; 22.5 LP Tires; Aluminum/Steel Wheels; 230 in Wheelbase; 12,000 lb Front Axle Weight; 40,000 lb Rear Axle Weight. New. (BPAW8761-ABQ-3)



1999 Freightliner FLD12064D, 10 Spd OD; Diesel; Engine Brake; 370 Ratio; 11R 22.5 Tires; 179 in Wheelbase. (XLB839559-BRY-2)



2007 Freightliner CL12064ST Century 120, 70 in Raised Roof Condo; 14 Detroit 500 hp; 10 Spd OD; Engine Brake; Air Ride Susp; 3:42 Ratio; 22.5 Tires; All Aluminum Wheels; 230 in Wheelbase; Tandem Axle, 482,850 Miles. (7LW48121-BRY-3)



2011 Freightliner Coronado, Detroit Diesel DD15, 475 HP, 10 SPD, Engine Brake, Tuff Trac Suspension, 227 Wheelbase, Air Brakes, Tire Size 24.5, Dual Locking Differentials, Aluminum Outers, Zero Miles. (BDAW9999-FAR-2)



2011 Western Star 4900SA, Detroit Diesel DD13, 450 HP, Tuff Trac Suspension, 220" Wheelbase, 24.5 Tires, Aluminum Front Wheels, Steel Rear Wheels, Zero Miles. (BPAZ8428-FAR-3)



2004 Freightliner CL12064ST Columbia 120, Series 60 Detroit 470 hp; 10 Spd OD; Engine Brake; Air Ride; 3.70 Ratio; 22.5 TALL Tires; All Steel Wheels; 171 in Wheelbase; Tandem Axle; 581,000 Miles. (4LM09963-SAN-2)



2005 Sterling Acterra 6500 Chemical Truck, Diesel CAT 300 hp; ; 9 Spd OD; Tuff Trac Susp; 22.5 Tires; Steel Disc Wheels; 190" WB; Semi Tank; 2,500 gal Capacity; Combination Composition; 3.90 R; 40,000 lb Rear Axle Wt; 13,220 lb Front Axle Wt, 150,000 Miles. (5AU05746-SAN-3)



2004 Freightliner Conventional, Detroit DDC 14.0, 455 HP, 10 Spd, Air Ride Suspension, 22.5 LP Tires, Steel Wheels, Single Axle, 687,744 Miles. (4DM86975-SHV-2)



2006 Freightliner FLD13264T Classic XL, 70 in Condo; C15 Caterpillar 475 hp; 13 Spd OD; Engine Brake; Air Ride; 3.55 Ratio; 22.5LP Tires; All Aluminum Wheels; 259 in Wheelbase; Tandem Axle, 465,321 Miles. (6DU26053-SHV-3)

See a complete inventory of new and used trucks and trailers online at: www.LonestarTruckGroup.com

Many models & colors to choose from.



2005 Freightliner CL12064ST Columbia 120, 70 in Raised Roof Condo; 14 Detroit Engine 470 hp; 13 Spd OD; Engine Brake; Air Ride Suspension; 3:73 Ratio; 24.5 LP Tires; All Aluminum Wheels; 240 in WB, 690,000 Miles. (5LU85755-TEM-2)



2007 Freightliner C12064ST Century 120, 70 in Raised Roof Condo; 14 Detroit 500 hp; ; 10 Spd OD; Engine Brake; Air Ride; 3:42 Ratio; 22.5 Tires; All Aluminum Wheels; 230 in Wheelbase; Tandem Axle; 590,000 Miles. (7LW41866-TEM-3)



2005 Kenworth T800, C15 Caterpillar Engine 435 hp; 10 Spd OD; Diesel; Engine Brake; Air Ride Suspension; 3.36 Ratio; 22.5LP Tires; All Aluminum Wheels; 228 in Wheelbase; Tandem Axle; 552,754 Miles. (5F096181-TXK-2)



2005 Peterbilt 379EXHD, 63 in Stand Up Sleeper; C15 Caterpillar 475 hp; 13 Spd OD; Eng. Brake; Pete Flex Air Susp; 3.36 R; 22.5LP Tires; Alum. Wheels; 263 in WB; 12,000 lb Front Ax. Wt; 36,000 lb Rear Ax. Wt, 678,321 Miles. 5D837487-TXK-3



2004 International 4300, Standard Cab; DT466 International Engine 215 hp; 6 Spd; 4 Spring Suspension; 24 ft Length x 102 in Width; 11R 22.5 Tires; All Steel Wheels; 254" Wheelbase; Single Axle; 175,260 Miles. (4H672065-TYL-2)



2006 Western Star 4900FA, MBE 4000 Mercedes Eng 460 hp; 10 Spd OD; Diesel; Engine Brake; TufTrac Suspension; 3.90 Ratio; 11R 24.5 Tires; Aluminum Outside Wheels; 220 in Wheelbase; Tandem Axle, 298,324 Miles. (6PU63039-TYL-3)



2007 Freightliner CL12064ST Century 120, 70 in Raised Roof Condo; 14 Detroit 500 hp; 10 Spd OD; Engine Brake; Air Ride; 3:42 Ratio; 22.5 Tires; All Aluminum Wheels; 230 in Wheelbase; Tandem Axle, 548,500 Miles. (7VL75445-WAC-2)



2005 Volvo VNL42T670, Raised Roof Sleeper; ISX Cummins Engine 400 hp; 10 Spd OD; Engine Brake; Air Ride Suspension; 3.36 Ratio; 22.5 Tires; All Aluminum Wheels; 230 in Wheelbase, 625,000 Miles. (5N373820-WAC-3)



2005 Freightliner Conventional , Detroit DDC 14.0, 455/490 HP, 10 Speed, Engine Brake, Air Ride Suspension, 183" Wheelbase 22.5 Tires, Steel Wheels, 597,751 Miles. (5LU68685-WFF-2)



2007 International 9900, Cummins ISX, 435 HP, 13 Spd, Engine Brake, Airride Suspension, 260" Wheel Base, 22.5 Tires, All Aluminum Wheels, Air Brakes, 599,330 Miles. (7C398278-WFF-3)



2001 Fontaine Drop Deck, Air Ride Suspension; 48 ft Length x 102 in Width; Aluminum Floor; 17.5 Tires; Combination Composition; Combo Drop Deck. Sliding winches and Tool box. Low deck height. (31071148-TYL-TRL-2) **\$15,500**



2004 Utility Side Curtain, 48 ft Length x 102 in Width; 24.5 Tires; Steel Disc Wheels; Sliding Tandem Axle; Closed Tandem, AIR SLIDER, Steel Wheels. (4A236301-TYL-TRL-3) **\$14,900**

Lonestar Truck Group
2051 Hughes Road
Grapevine, TX 76051

PRESORT STANDARD
U S POSTAGE
PAID
GLOBAL MAIL

RETURN SERVICE REQUESTED



**Your one-stop source
for truck and trailer
sales, parts and service.**

www.LonestarTruckGroup.com LS-1229 InGear Newsletter, ©Lonestar Truck Group, February 2011



YOU CAN GET THE RIGHT FINANCING...RIGHT AWAY!

Daimler Truck Financial

Financing that works for you.

The Lonestar Truck Group, gives you access to numerous national and regional lending sources and our finance professionals can help you choose the truck finance option that is right for you. Trac Lease, Full Service Lease and more traditional forms of financing are available to you, including a first time buyer's program. Whether you run a fleet of trucks, a single unit, or are looking for your first truck; allow the friendly, knowledgeable sales and finance professionals at your nearest Lonestar Truck Group location to assist you with your next truck purchase.

We can help you find the right financing...right away!

■ **FAST!**

Most lenders can decision your credit application in one day or less.
Some lenders can respond in just a couple of hours!

■ **CONVENIENT!**

We'll help you find the right truck AND the right financing for your next truck purchase. We will streamline the application and the documentation process for you. Enjoy the convenience of "One Stop Shopping!"

■ **COMPETITIVE!**

Our lenders will tailor a finance program that fits your specific need AND fits your budget!

■ **KEEP YOUR FINANCE OPTIONS OPEN!**

By utilizing the truck financing options available through the Lonestar Truck Group, you can keep your financing options open with your local bank for other types of financing that may be necessary for your business; such as working capital loans or building expansion.

